

ESC-74

Roller and Skate Wheel conveyors are designed for tray make-up. These conveyors will help for streamline tray assembly for healthcare or catering operations. Both units can be equipped with an electric raceway and breaker panels for on-line support equipment connections. Roller conveyors will handle compartment or flat bottom trays. Skate Wheel conveyors will handle flat bottom trays only.

## STANDARD FEATURES

- Stainless steel frame
- PVC rollers or Nylon rollers
- Stainless steel bullet feet
- Stainless steel "H" frame

JOB \_\_\_\_\_ ITEM # \_\_\_\_\_ QTY # \_\_\_\_\_

## MODEL NUMBER:

- |                                 |                                 |                                 |
|---------------------------------|---------------------------------|---------------------------------|
| <input type="checkbox"/> SRC-10 | <input type="checkbox"/> SSC-10 | <input type="checkbox"/> ESC-32 |
| <input type="checkbox"/> SRC-12 | <input type="checkbox"/> SSC-12 | <input type="checkbox"/> ESC-46 |
| <input type="checkbox"/> SRC-14 | <input type="checkbox"/> SSC-14 | <input type="checkbox"/> ESC-60 |
| <input type="checkbox"/> SRC-16 | <input type="checkbox"/> SSC-16 | <input type="checkbox"/> ESC-74 |
| <input type="checkbox"/> SRC-18 | <input type="checkbox"/> SSC-18 | <input type="checkbox"/> ESC-88 |
| <input type="checkbox"/> SRC-20 | <input type="checkbox"/> SSC-20 |                                 |

## CONSTRUCTION

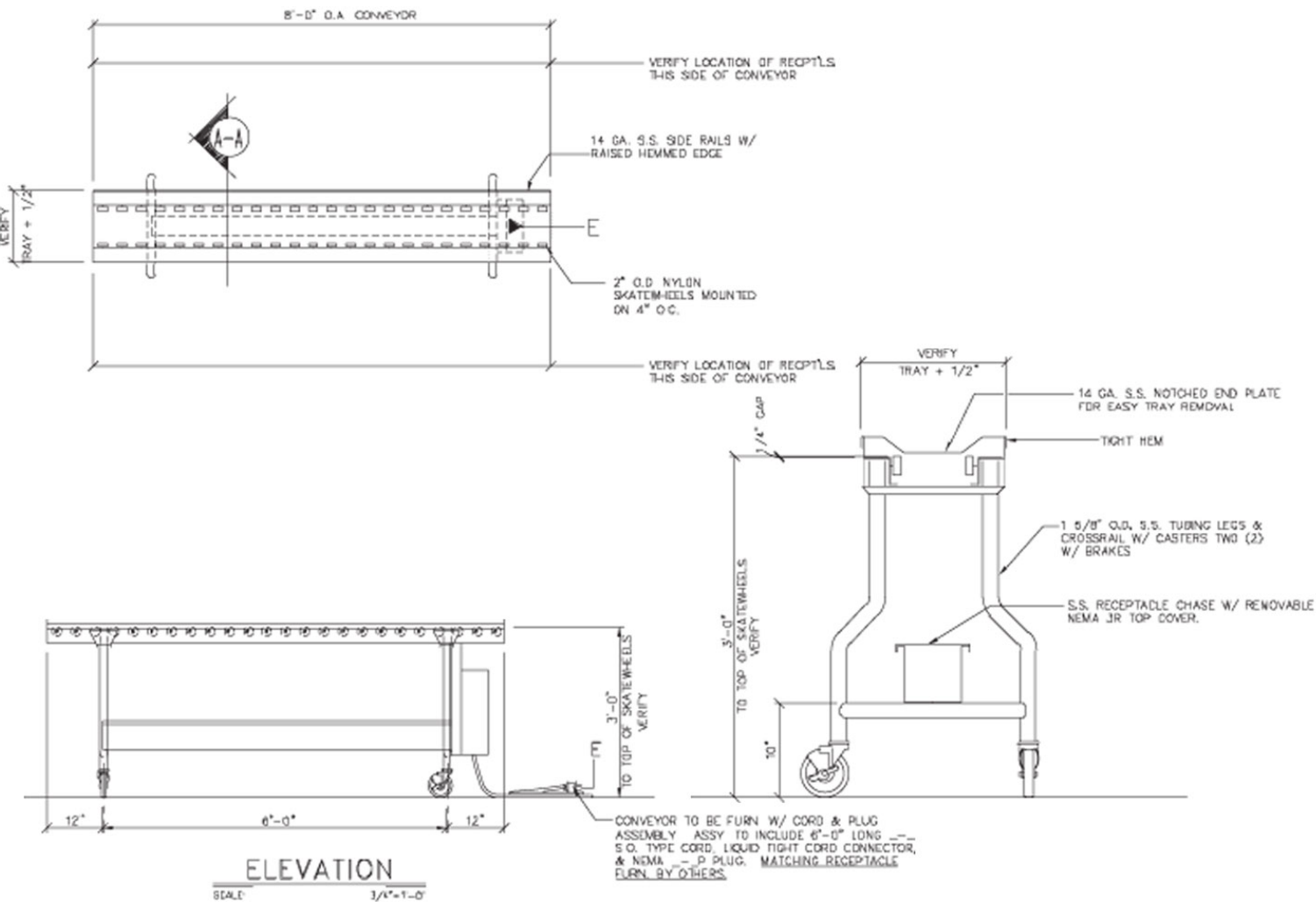
Roller conveyors shall have a 1-7/8" O.D. gray P.V.C. tubing with stainless steel ball bearings. Rollers mounted on stainless steel hex springloaded shafts. The rollers are spaced on 3" or 4" centers.

Skate Wheel assemblies shall be 2" diameter nylon wheels with low friction bushing for free movement. Wheels are secured to frame with stainless steel bolts with with self-locking nuts. Wheels are spaced 3" to 4" centers and are removable for easy cleaning.

Conveyors are supported by a 1-5/8" O.D. 16 gauge stainless steel tubular legs. Stainless steel tubing fits into stainless steel sleeves welded to conveyor frame. Legs are secured to sleeves with allen head set screws. Conveyors come standard with adjustable stainless bullet feet.

## WARRANTY

One year parts and labor. Warranty is detailed on inside front cover of the price list.



COMMON OPTIONS	
<input type="checkbox"/>	Caster Option
<input type="checkbox"/>	Field Joints (bolt on or field welded) For Over 10 Ft.
<input type="checkbox"/>	For Stainless Steel Rollers Per Lin. Ft.
<input type="checkbox"/>	Movable Overhead Shelf Per Lin. Ft.
<input type="checkbox"/>	Removable Sections Per Lin. Ft.
<input type="checkbox"/>	CP Correctional Package

SPEC G-1