

CSC

JOB _____ ITEM # _____ QTY # _____

MODEL NUMBER:

- ☐ CSC-4 ☐ CSC-6 ☐ CSC-8
☐ CSC-5 ☐ CSC-7

CONSTRUCTION

The cantilever conveyor has a standard conveyor pan. The roller style shall have 1-7/8" O.D. gray PVC tubing with stainless steel hex spring-loaded shafts. The skate wheel style shall have 2" diameter nylon wheels with low friction bushing for free movement. Wheels are secured to frame with stainless steel bolts with self locking nuts. Wheels are spaced on 3" to 4" centers and are removable for easy cleaning.

Cantilever conveyor uprights are 1-5/8" diameter 16-gauge stainless steel tube. Conveyors up to 6' have two uprights. Uprights have 1-1/4" 18-gauge stainless steel cross rails welded between for support and each upright has a 12-gauge stainless steel fully welded gusset for support.

Pan consists of a 14-gauge stainless gusset welded to a stainless tube that slides over uprights making an adjustable conveyor height.

WARRANTY

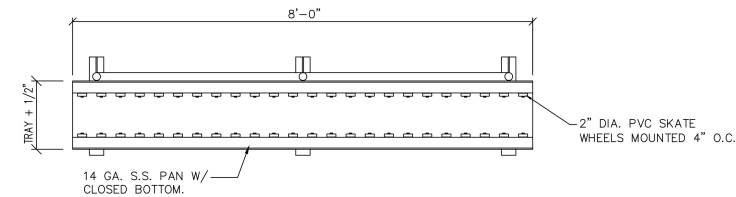
One year parts and labor. Warranty is detailed on inside front cover of the price list.

The Cantilever conveyor can be positioned under support equipment with conveyor roller assembly over top of the support equipment. There are two different styles of cantilever conveyor. The roller has 1.7/8" PVC rollers making it ideal for compartmental trays as well as flat bottom trays. The skate wheel has 2" diameter nylon wheels and will handle flat bottom trays only. The cantilever conveyors can be a space saver in certain applications.

STANDARD FEATURES

- 3" diameter swivel plate type casters (2 of 4 or 3 of 6 have brakes)
- Adjustable height
- Stainless steel frame
- Stainless steel uprights
- PVC rollers or Nylon skate wheels

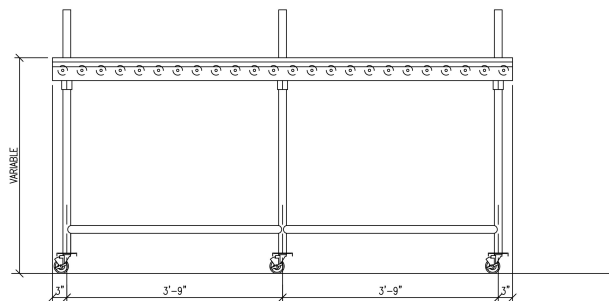
SPEC G-1B



PLAN VIEW

ITEM #1: TRAY MAKE-UP CONVEYOR

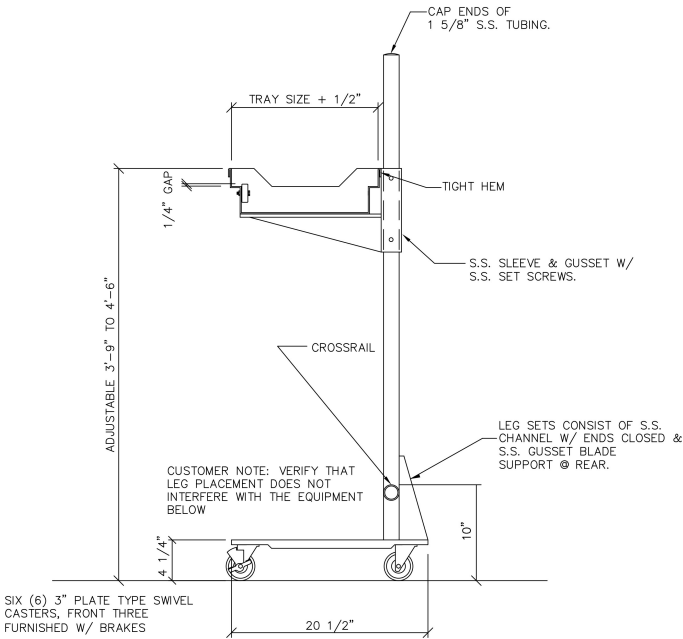
MODEL #CSC-8



1 5/8" O.D. S.S. TUBING UPRIGHTS, AND CROSSRAILS W/ CASTERS

CUSTOMER NOTE: VERIFY THAT LEG PLACEMENT DOES NOT INTERFERE WITH THE EQUIPMENT BELOW

ELEVATION



TYPICAL SECTION

COMMON OPTIONS

- ☐ Field Joints (bolt on or field welded) For Over 10 Ft.
- ☐ For Stainless Steel Rollers Per Lin. Ft.
- ☐ Removable Sections Per Lin. Ft.
- ☐ CP Correctional Package

SPEC G-1B