

JOB _____ ITEM # _____ QTY # _____

MODEL NUMBER:

□ OP-3

DIMENSIONS:

• 74.5"H x 33"W X 36"D

INTERIOR DIMENSIONS:

- Proofer: 24.5"W x 30"D x 30.75"H
- Oven: 24.5"W x 30"D x 26.5"H
- 6.5" in Oven and racks adjustable every 3" in Proofer

CONSTRUCTION

The oven corner posts shall be 18 gauge stainless steel with a 20 gauge stainless steel wrapper for top, sides and back panels. The interior oven cavity shall be constructed of heat retentive 18 gauge aluminized steel with chrome plated wire racks on .190 aluminum decks.

The oven shall work with a patented "Heat Sink" principle and "Natural Convection" technology. When the materials in oven are heated to the proper temperature the oven shall bake with radiant heat and conduction. The oven shall also have heat release vent that draws air through the oven cavity and over decks.

The oven shall have no moving parts. Each deck shall be individually, thermostatically controlled. The oven shall have a heat reflective tempered glass door.

The ovens proofer shall be constructed of 18 gauge stainless steel. The proofer shall have a thermostatically controlled 750 watt element for creating heat and an infinitely controlled humidistat 1250 watt burner element for creating moisture. Proofer shall be brightly lighted.

Oven proofer combinations shall have three individual circuit breakers. One for the proofer thermostat and heat element. One for the humidity infinite switch and burner element and one for the oven lights.

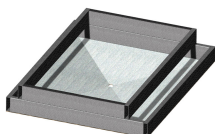
WARRANTY

One year parts and labor. Warranty is detailed on inside front cover of the price list.



Optional: COOL TOUCH TECHNOLOGY

Reduces door temp to under 100 degrees



PIPER'S SUPERIOR FOUNDATION

Fully welded coated steel frame with 18 gauge base plate

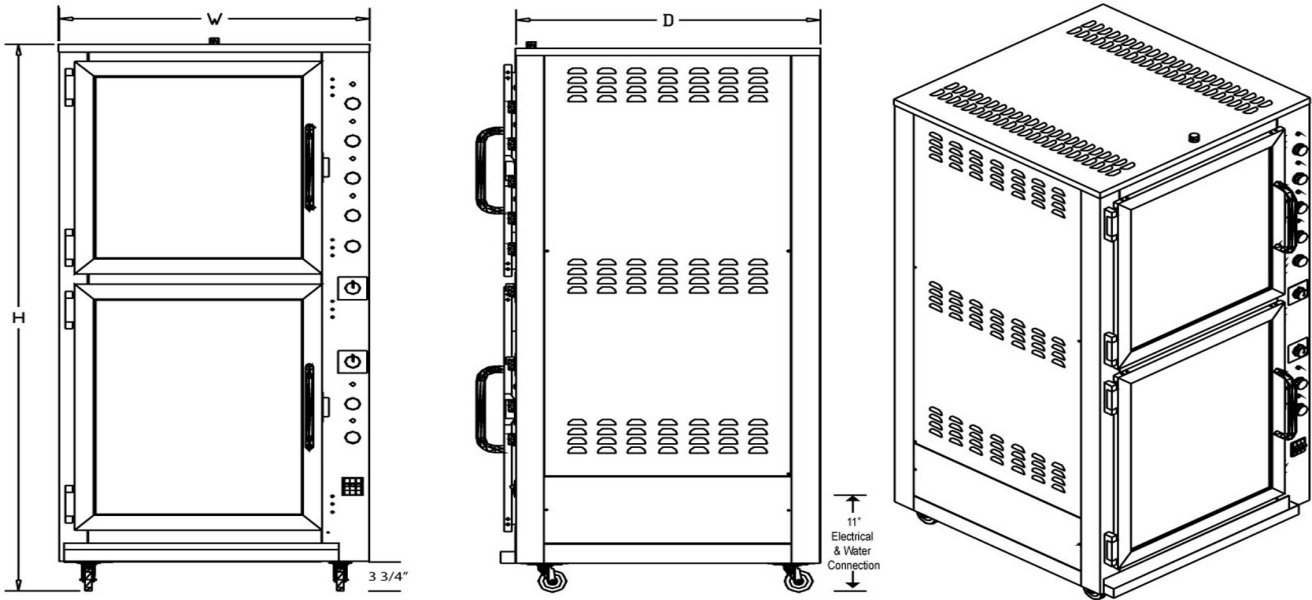
OP-3

The OP-3 from Super Systems is a mini baking system in one space-saving cabinet! This 3-pan oven, 9-pan proofer meets all your baking needs - and does it in less than 8 square feet of floor space! Our patented design provides a top-notch hearth bake and easy, reliable proofing, giving you beautiful baked product.

STANDARD FEATURES

- Individually controlled oven and proofer Each oven deck individually thermostatically controlled, provides precision "hearth" bake, and allows for more control over baking environment
- Natural convection & radiant heat design does not dry out product
- No moving parts in oven reduces maintenance problems and increases reliability
- Full-view, heat-reflective tempered glass door allows for energy-efficient sight baking and proofing
- Each deck brightly lighted provides sight merchandising
- Heavy-duty, stainless steel construction easily cleaned and maintained
- Individual heat and humidity controls in proofer provides precise control over proofing/warming environment
- High volume blower in proofer circulates heat and humidity efficiently in proofer
- Manual fill water pan has 4.3 quart capacity, autohumidity optional
- Positive magnetic door closure
- 60 Minute reminder timer
- Field reversible doors, left or right hinged
- Removable drip trough provided under proofer door

SPEC O-2



ELECTRICAL*

VOLTS	PHASE	WIRE**	AMPS	WATTS	HERTZ
120/208	1	3	40	8250	60
120/240	1	3	36	8250	60
120/208	3	4	27	8250	60
120/240	3	4	24	8250	60

*Units are shipped without cord and plug. Designed to be hard wired. Installation requires a 4" clearance around the entire unit and should be made by a licensed electrician. Check local codes for vent hood requirements.

** Number of wires does not include ground.

Note: Optional automatic humidity feature, with the proofer section, requires 1/8" FPT water line to be supplied. Product failure caused by liming or sediment buildup is not covered under warranty.

COMMON OPTIONS	
<input type="checkbox"/> CTT	Cool Touch Technology
<input type="checkbox"/> H	Automatic Humidity (proofer section)
<input type="checkbox"/> HVS	High Volume Steam (1 oven section)
<input type="checkbox"/> W	Warmer Package

CAPACITY

OVEN ACCOMMODATES:

- 3, 18" x 26" Sheet Pans, 6, 4-strapped 1lb Bread Pans, 6, 4-strapped 1.5lb Bread Pans, 18, 9" Pies, 3, 18" Pies, any combination of the above

PROOFER ACCOMMODATES:

- 9, Nylon-coated Wire Racks, 9, Standard 18" x 26" Sheet Pans, 8, 4-strapped 1lb Bread Pans, 8, 4-strapped 1.5lb Bread Pans, any combination of the above

SHIPPING INFORMATION

- Shipping Weight: 600 Lbs
- Shipping Cubic Feet: 50.44
- Freight Class: 100